



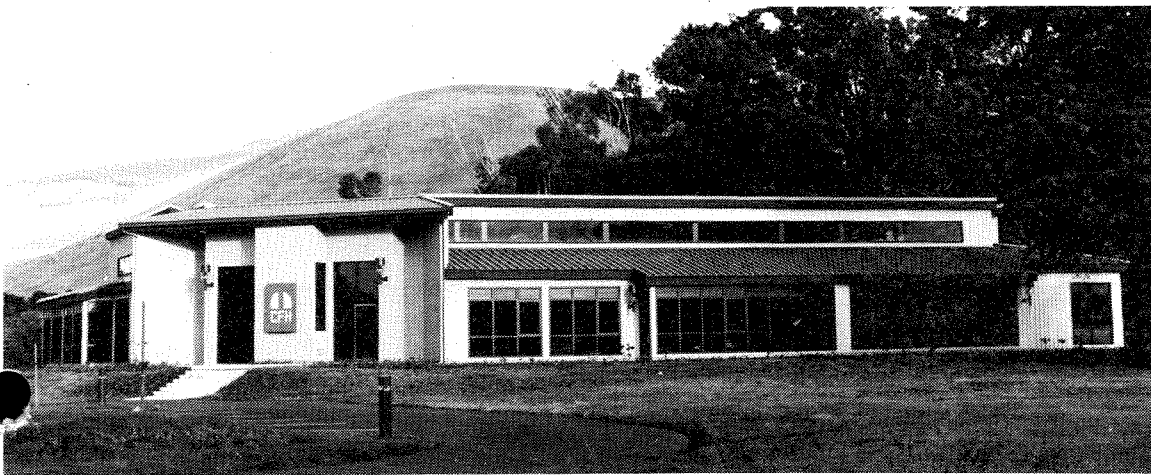
CANADA-FRANCE-HAWAII TELESCOPE

INFORMATION BULLETIN

BULLETIN NO. 8

DECEMBER 1982

Brand New Home for CFHT



The corner of the new base facility with the main entrance, as the visitor discovers it. In the background, the grassy Kohala Mountains with Buster Brown, the hill dominating Waimea.

At last! CFH has its own home. Those who have known the telescope project since its beginning will appreciate what a pleasure it was for the staff to move into permanent offices on October 19. From the prophetically named prefabs of INAG, called "Vahines" because they had previously been in French Polynesia, to Meudon and La Rochelle, to the trailers in Waimea, "temporary" had been our way of life.

Because they understood our situation, the National Research Council of Canada, and the Centre National de la Recherche Scientifique of France, set up a special fund that enabled us to start construction in January of 1982.

Our new building has four wings surrounding a small central courtyard. With the offices around this atrium, we gain maximum protection from the wind and horizontal rains, so frequent in Waimea. The small ornamental trees in the courtyard will soon grow and create a delightful place to enjoy a cup of coffee or a conversation with a colleague.

CFH employees are not alone in their admiration for the new building. Local residents and visitors alike have expressed their approval too. Often heard is the remark: "It's handsome, but it must have cost a fortune". We're proud to

answer that, thanks to our fine architect, Mr. Harrell McCarty, this extraordinarily pleasant building was constructed at a cost of \$89 per square foot.

Halley's Comet Sighted

TELEX TO DR. MARSDEN

J. BAUDRAND, M. COMBES, E. GERARD, J. GUERIN, J. LECACHEUX AND B. SICARDY (PARIS-MEUDON OBSERVATORY), G. LELIEVRE AND J. P. LEMONNIER (C.F.H.), AND J. P. PICAT (PIC-DU-MIDI - TOULOUSE OBSERVATORY) REPORT:

WE HAVE OBSERVED COMET HALLEY (1982 I) ON OCTOBER 16-17 AND NOVEMBER 15-16 WITH THE 3.6m C.F.H. TELESCOPE USING THE PRIME FOCUS ELECTRONOGRAPHIC CAMERA (F/4.2).

THE COMET WAS DETECTED ON THREE 61-mn EXPOSURES ON NOV. 15-16. THE MEASURED MAGNITUDE IS $B = +24.6 (+/- .4)$.

THE COMET WAS ALSO DETECTED MARGINALLY ON THE BEST ELECTRONOGRAPHIC EXPOSURE ON OCTOBER 17, AND PERHAPS (QUESTIONABLY) ON A DEEP PHOTOGRAPHIC IIIA-F EXPOSURE ON OCTOBER 16. THE MAGNITUDE WAS ABOVE $V = +24.1$.